



# Monthly Meeting and Lecture

Wednesday, 15 June 2022 (6:45 – 8:00 pm)

## Critical Infrastructure Resilience Concepts, Frameworks, & Strategies

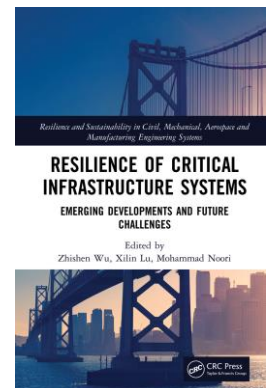
Dr. John E. Thomas, Scholar in Residence University of Colorado

**Location:** This presentation is purely **VIRTUAL/ONLINE.**

*An online chat questions-and-answers session will also be available. Webcast Link will be sent to Registrants*

**Presentation:** Critical infrastructures essential to public health, safety, and well-being are inherently vulnerable to unanticipated disruptions that can impact businesses, technical operations, supply chains, and daily life across local, regional, and global scales. The cascading effect of complex system breakdowns reflects the interdependence among systems and adds to the complexity of effective resilient response, which often requires interaction across multiple operating domains in public, private, and commercial sectors. With a focus on applications to critical infrastructures, this presentation will introduce resilience engineering concepts and frameworks relevant to unanticipated social, ecological, and technological system disruptions or surprises.

**Speaker:** Dr. John E. Thomas is a Scholar in Residence with the Engineering Management Program in the School of Engineering and Applied Sciences, University of Colorado, Boulder. John is passionate about the promise of sustainable and resilient life experience for future generations. His research interests explore the boundaries of engineering and social science to understand the dynamic relationships between human resilience, psychological development, and the resilience of complex social, ecological, and technological systems like critical infrastructure supporting community well-being. Dr. Thomas holds BS & MS degrees in Electrical Engineering, a MBA, and a Ph.D. in Civil, Environmental, and Sustainable Engineering



### Door Prize

**Resilience of Critical Infrastructure Systems Emerging Developments and Future Challenges** by Wu, Lu, and Noori



To be sent the Webcast Link, please register at

[incose-cc.eventbrite.com](http://incose-cc.eventbrite.com)

### Our Evening's Agenda

- 6:00 – 6:45 pm SE Table talk
- 6:45 – 7:00 pm Chapter Business Meeting
- 7:00 – 8:00 pm LECTURE

Search [“INCOSE Chesapeake” on YouTube](#) for all Monthly Lectures